

CAPSULE HOUSE SERIES



APPLE CABIN SERIES



TWO-STORY CABIN SERIES



NATURAL HOUSE SERIES



EXPANDABLE HOUSE SERIES



DOMES HOUSE SERIES





Resorts by the sea and lakes  
Self-sufficient and eco-friendly.







## Oil and industrial facilities.

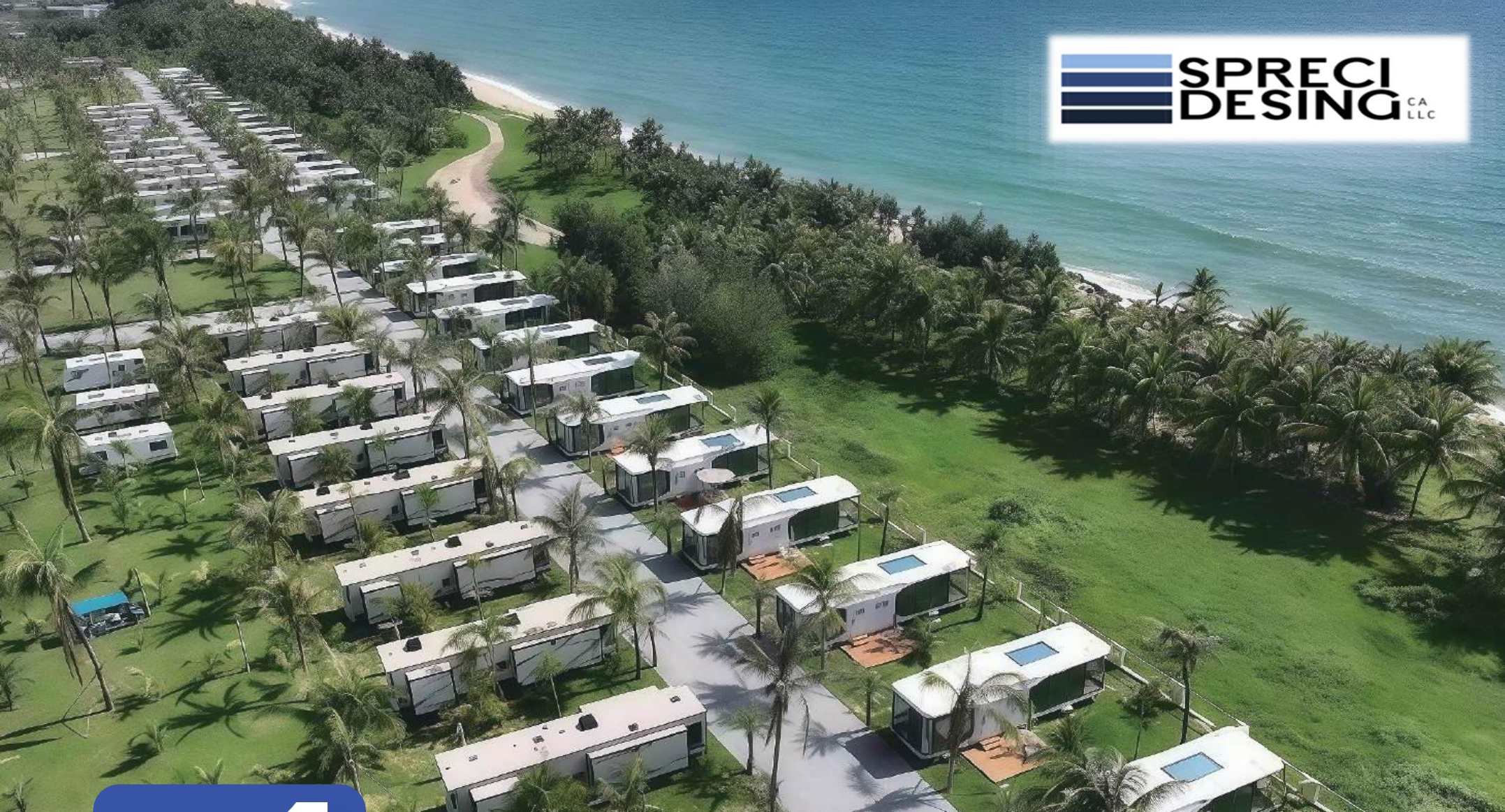




Complexes presented in GUYANA.







网红民宿  
Trending Hotel



不限地形  
No Terrain Restriction



精装修  
Fine Decoration



奢华住宿体验  
Luxury Living



安装简单  
Easy Installation



项目落地快  
Fast Project Building





E3

外形尺寸/L\*W\*H: 5.6m\*3.2m\*3.2m

面积/Area: 17.92m<sup>2</sup>



E5

外形尺寸/L\*W\*H: 8.5m\*3.2m\*3.2m

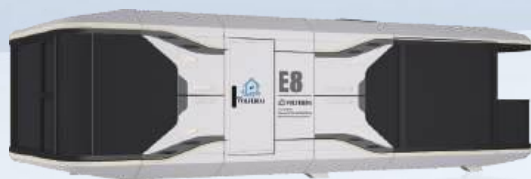
面积/Area: 27.2m<sup>2</sup>



E6 balcony

外形尺寸/L\*W\*H: 8.5m\*3.2m\*3.2m

面积/Area: 27.2m<sup>2</sup>



E8 balcony

外形尺寸/L\*W\*H: 11.5m\*3.2m\*3.2m

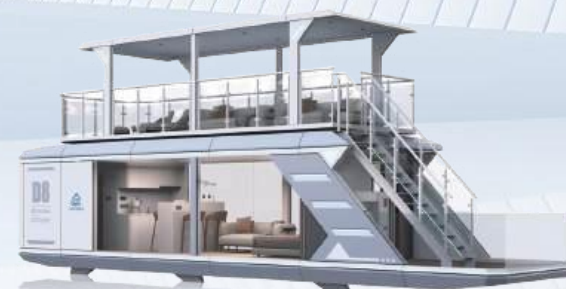
面积/Area: 36.8m<sup>2</sup>



E8 no balcony

外形尺寸/L\*W\*H: 11.5m\*3.2m\*3.2m

面积/Area: 36.8m<sup>2</sup>



D8

外形尺寸/L\*W\*H: F1:14m\*3.4m\*3.2m F2:9m\*3m\*2.5m

面积/Area: 47.6m<sup>2</sup>+27m<sup>2</sup>

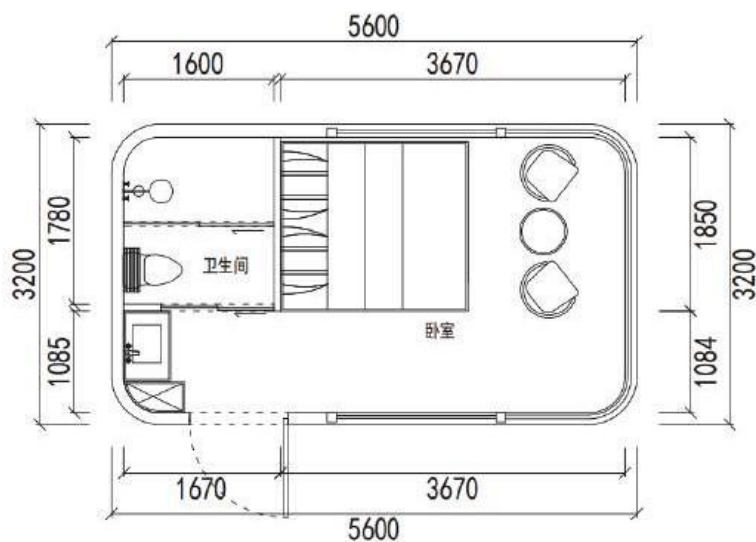




■ 外形尺寸/L\*W\*H: 5.6m\*3.2m\*3.2m 面积/Area: 17.92m<sup>2</sup>

E3的小型太空舱, 全铝板外壳, 外型汲取了太空飞船的灵感设计, 一房一卫的紧凑型户型设计, 最大的好处就是节省运费, 因为一个集装箱可以装2套, 更具性价比。均配备了270度超大的观景落地窗, 加上超大的阳台, 观景视觉一览无余。

The model E3 is a smaller capsule house, built in an all-aluminum shell, draws inspiration from spaceships. One-bedroom, one-bathroom design offers the greatest benefit of saving on shipping costs, as two units fit into one container, making it more cost-effective. Each unit features 270-degree floor-to-ceiling windows and a large balcony, offering wonderful views.

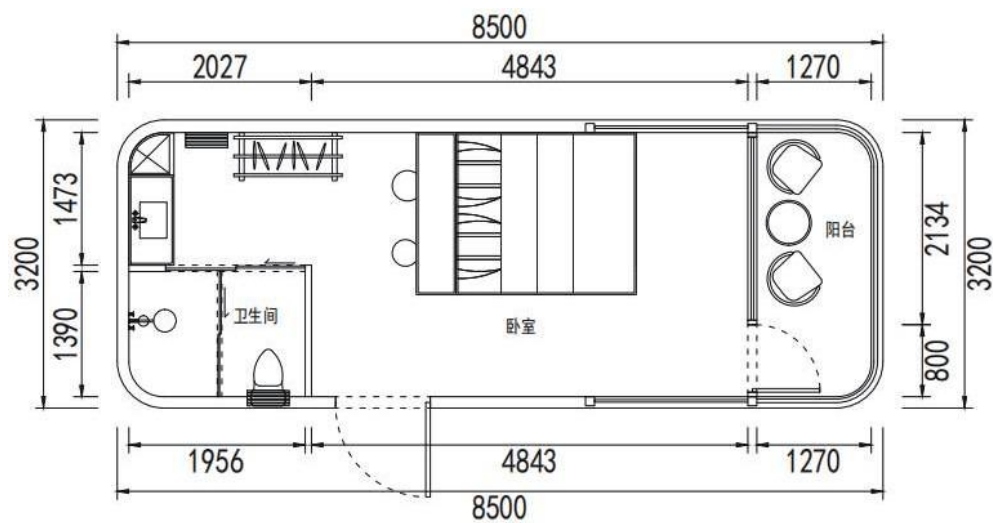




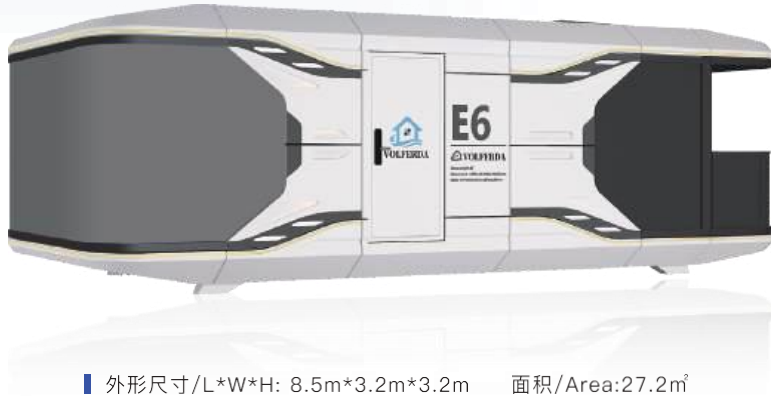
■ 外形尺寸/L\*W\*H: 8.5m\*3.2m\*3.2m 面积/Area: 27.2m<sup>2</sup>

E5太空舱，整个造型采用太空飞船外形设计，全铝的外壳，搭配弧形玻璃，造型美观。一房一卫的设计，无论是酒店、民宿还是自住，是放在海边、湖边、山上、沙漠，都让你体验住在风景里的感觉。

The model E5 features a spaceship-like design, an all-aluminum exterior, and curved glass for a beautiful aesthetic. Its one-bedroom, one-bathroom design allows you to experience the feeling of living amidst the scenery, whether you're staying in a hotel, B&B, or your own residence, whether by the sea, lake, mountain, or desert.



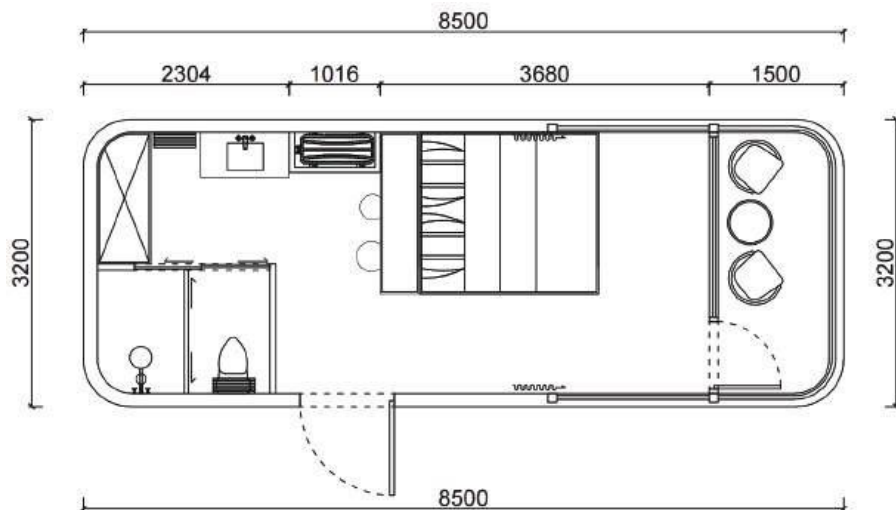




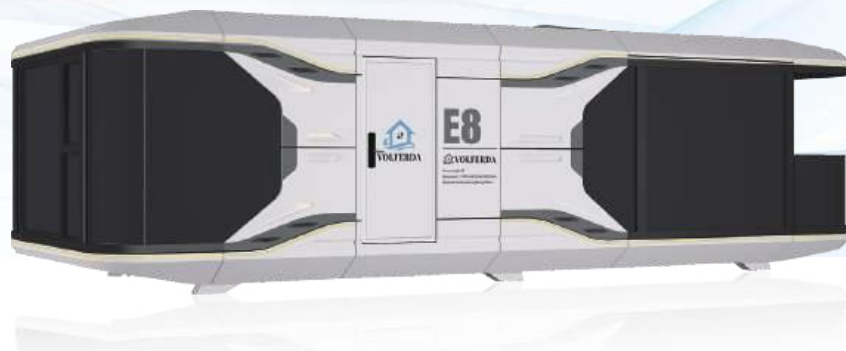
■ 外形尺寸/L\*W\*H: 8.5m\*3.2m\*3.2m 面积/Area:27.2m<sup>2</sup>

E6是E5的升级版，外型更好看。多处弧形的线条，让房子更具科技感。型汲取了太空飞船的灵感设计，一室一卫的设计，均配备了270度超大的观景落地窗，加上超大的阳台，观景视觉一览无余。

The E6 is an upgraded version of the E5, boasting a more attractive design. Multiple curved lines give the home a more technological feel. The design draws inspiration from spaceships, and the one-bedroom, one-bathroom design features 270-degree floor-to-ceiling windows and a large balcony, offering unobstructed views.



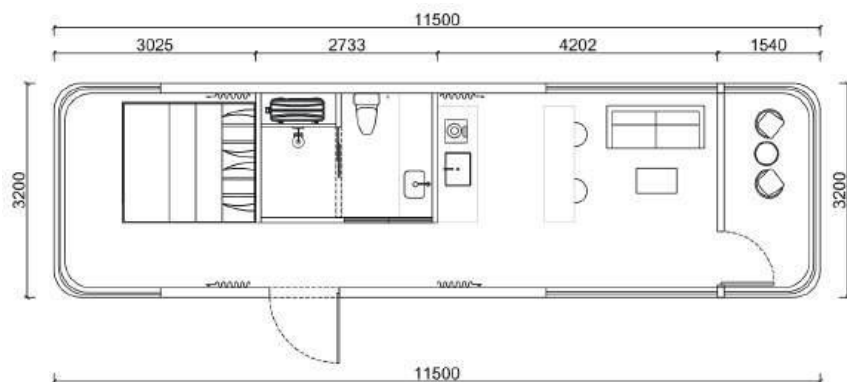




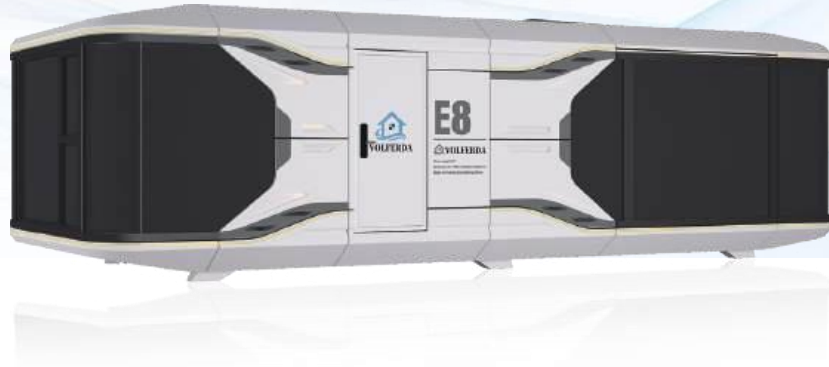
■ 外形尺寸/L\*W\*H: 11.5m\*3.2m\*3.2m    面积/Area:36.8m<sup>2</sup>

E8是最热销的房型，整个造型采用太空飞船外形设计，棱角外壳搭配弧形玻璃，造型美观。前后两室加中间卫生间的布局，前后两室均配备了270度超大的观景落地窗，加上超大的阳台，风景一览无余。无论是酒店、民宿还是自住，是放在海边、湖边、山上、沙漠，都让你体验住在风景里的感觉。

The E8 is the best-selling model and is designed in a spaceship shape with an angular shell and curved glass for a great look. The house adopts the layout of two rooms in the front and back and a central bathroom. Both rooms are equipped with 270-degree oversized floor-to-ceiling windows for viewing, together with an oversized balcony with an unobstructed view. Whether it is a hotel, B&B or self-living, whether it is placed on the beach, lake, mountain or desert, it allows you to experience the feeling of living in the scenery.



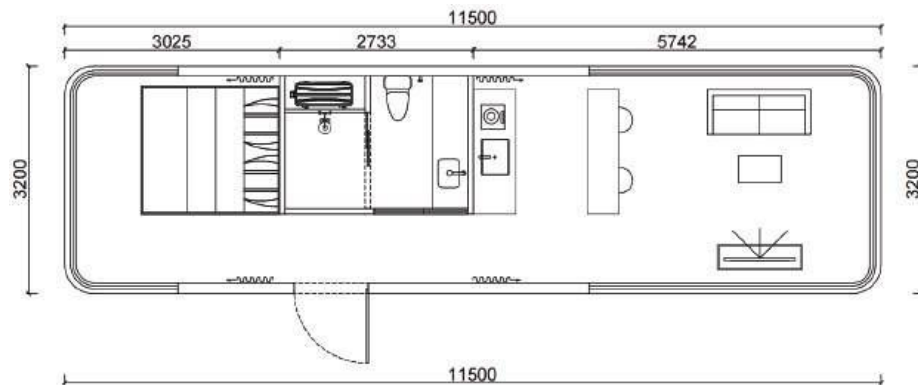




■ 外形尺寸/L\*W\*H: 11.5m\*3.2m\*3.2m    面积/Area:36.8m<sup>2</sup>

这款E8是封阳台的版本，保留了原有布局，取消了阳台，使得前室有更大的空间，可以作为厨房和客厅，或者主卧来使用，满足你个性化要求。同时封闭的空间，更加适合俄罗斯、加拿大等寒冷地区，保温更好。所有的太空舱都可以整装和拆装运输，对于项目数量大的拆装方案项目，volferda可以上门安装，节省运费等成本。

This E8 is the model without balcony, retains the original layout and removes the balcony, allowing more space in the front room, so that it can be used as a kitchen and living room, or master bedroom to meet your personalized requirements. Meanwhile the closed space is more suitable for cold regions, such as Russia and Canada, with better insulation. All the capsule can be transported fully loaded and disassembled, and for disassembled projects with a large number of items, volferda can come to your home and install them, saving costs such as freight.



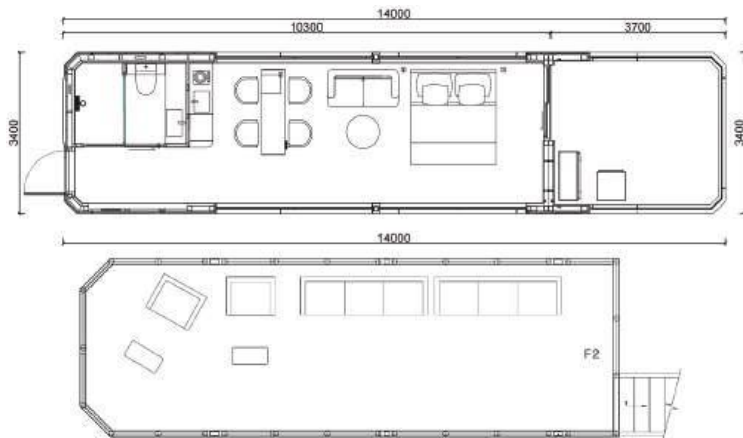




■ 外形尺寸/L\*W\*H: F1:14m\*3.4m\*3.2m F2:9m\*3m\*2.5m 面积/Area: 47.6m<sup>2</sup>+27m<sup>2</sup>

D8是最高端的房型，汲取了豪华游艇的灵感设计，同时增加了长度和宽度，使得空间更大。一楼，一室一卫布局，用于休息居住；二楼超级大露台，超级无敌的观景大平台，适合高端奢华的酒店民宿。二楼露台可拆卸运输，再当地拼装。

The D8 is the most high-end room type, drawing on luxury yacht-inspired design while increasing length and width to allow for more space. On the first floor, a one-bedroom, one-bathroom layout is used for lounging and living; on the second floor, the superb second floor terrace, with its superb, unrivaled views, is suitable for high-end luxury hotel B&Bs. The second floor terrace can be disassembled for transportation and then assembled locally.





## ■ 标准版 STANDARD CONFIGURATION

### 抗震热镀锌钢结构体系

Anti seismic hot-dip galvanized steel structural system

### 多层隔热保温结构体系

Multi layer thermal insulation structural system

### 标准色定制铝外板覆件

Standard color custom aluminum outer panel cladding

### 标准色定制铝天花棚板

Customized aluminum ceiling panels in standard colors

### 标准色定制内饰面墙板/棚板

Standard color custom interior decorative wall/ceiling panels

### 标准色定制内装柜体

Standard color custom interior cabinet

### 品牌高端卫浴洁具

Top Brand high-end bathroom fixtures

### 品牌水路主材施工体系

Top Brand water pipes and circuit main material construction system

### 全屋冷暖空调+热水器

Whole house HVAC+water heater

### 全屋电动轨道+遮阳帘

Whole house electric track+sunshade

### 全屋照明+室内外氛围灯光

Whole house lighting+indoor and outdoor ambient lighting

### 断桥铝门窗体系+中空LOW-E钢化玻璃幕墙结构

Aluminum alloy door and windows system hollow low-e tempered glass curtain wall structure

### 保温隔热防火入户门+智能门禁

Thermal insulation and fireproof entrance door intelligent access control

## ■ 选配 OPTIONAL

### 智能语音控制系统(国内)

Intelligent voice control system (CHINA)

### 新风系统

Fresh air system

### 地暖系统

Underfloor heating system

### 太阳能供电系统

Solar power supply system

### 专属定制化布局方案

Exclusive customized layout plan

全系配置180°~360°的落地观景大窗，体验被虫鸣鸟叫唤醒，拉开窗帘便是丛林树木，山川河流，感受如梦似幻的居住体验。

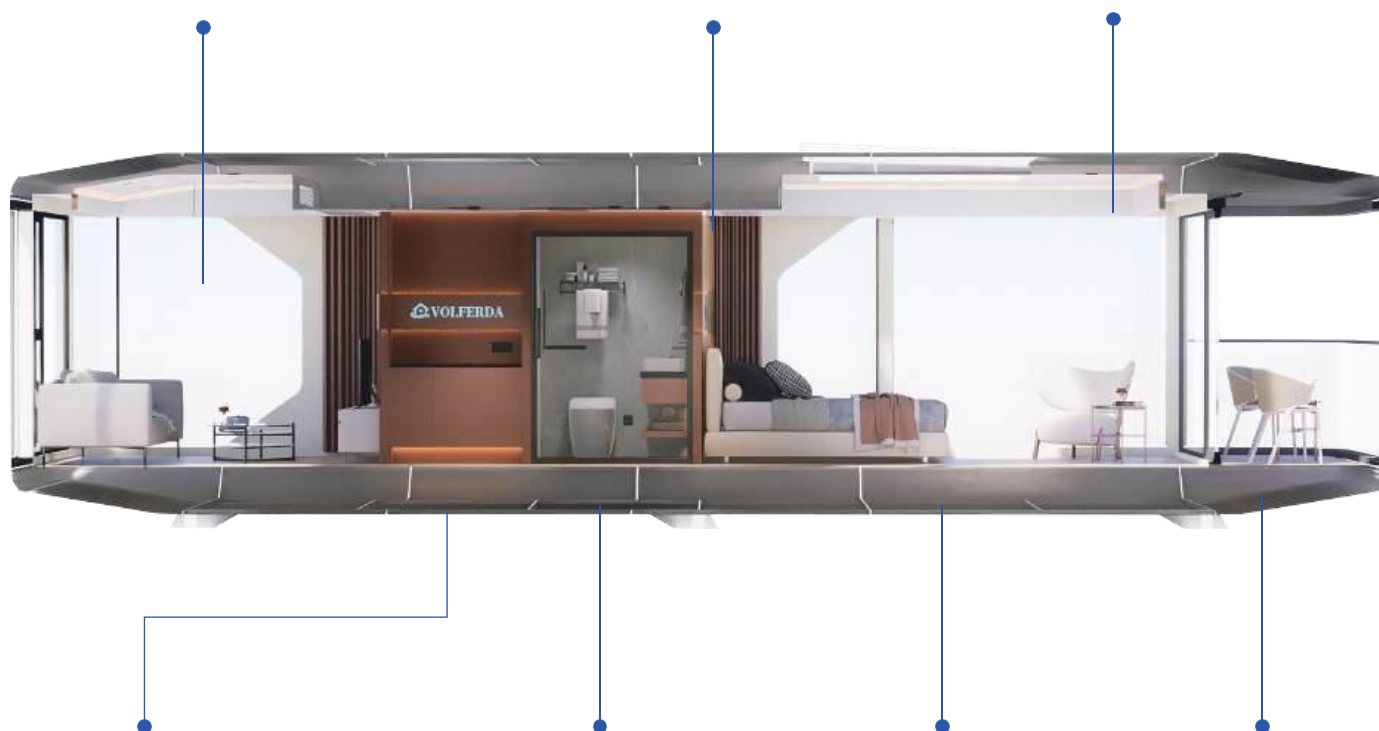
The entire series is equipped with floor to ceiling observation windows ranging from 180° to 360°. Experience being awakened by the chirping of insects and birds, and open the curtains then you can see the jungle trees. Experience a dreamlike living experience through mountains and rivers.

定制化的智能面板，双控联动，灯光、窗帘所有功能一触即达。

The indoor area is equipped with lighting and ambient virtual light. Using lights with different color temperatures to cope with different usage environments. Combined with the sunlight or starry sky after the panoramic sunroof is opened. Create a warm and romantic lighting environment.

顶部空间可集成空调内机、浴霸、排风设备间，隐蔽式安装预留检修口，方便日常维护且不影响整体美观度。

The top space can be integrated with air conditioning units, bathroom heaters, and exhaust equipment rooms. Concealed installation with reserved maintenance openings, Convenient for daily maintenance without affecting overall aesthetics.



室内区域配置了照明光加氛围虚光，采用不同色温的灯光来应对不同的使用环境，配合全景天窗开启后的阳光或是星空营造出温馨和浪漫的照明环境。

Customized intelligent panels Dual control linkage, lighting, curtains All functions are easily accessible with just one touch.

全系标配高端品牌卫浴，干湿分离设计，舒适的布局，感受品质生活带来的愉悦体验。

All models have high-end top brand bathrooms, Dry and wet separation design, comfortable layout, Experience the pleasure brought by quality living.

宽敞的平面空间，可自行配置软装家具，设置成各种心仪的区域，自由探索多种搭配和拓展。

Spacious flat space with customizable soft furnishings, Set it as various desired areas, Free exploration of various combinations and expandability.

部分型号配置有餐厨空间，可定制化增减各类厨房用具，满足从轻度使用到长期居住的用餐下厨需求，自由感受旅途中的那份人间烟火气。

At leisure, the balcony is the best place to relax your mind; E-series capsule, balcony and non-balcony models are designed to cater to customers with different needs; the layout design of the room can be customized.



#### 镀锌钢管

##### Galvanized Steel

主体框架使用100mm\*100mm的镀锌钢管，重达2.6吨，不生锈，耐腐蚀，强度高，抗震性能好，多次吊装也不变形。

The main frame is made of 100mm\*100mm galvanized steel pipe, weighing 2.6 tons, which is non-rusting, corrosion-resistant, of high strength, with good anti-seismic properties, and does not deform even after many lifts.

#### 中空Low-e玻璃

##### Hollow Low-e Glass

6+15A+6mm中空Low-e玻璃，隔音隔热更好，而且还镀了一层膜，保护隐私。

6+15A+6mm insulated Low-e glass for better sound and heat insulation, and coated for privacy.

#### 珍珠棉

##### Cement Fiber Board

底板和地板的中间铺一层珍珠棉，重量轻，保温隔热，吸音隔音。

A layer of pearl cotton in the middle of the floor and the floor, light weight, heat insulation, sound-absorbing sound insulation.

#### 水泥纤维板

##### Cement Fiber Board

重量轻，强度高，韧性好，导热系数低，有良好的隔热保温性能，产品密度高，隔音好。

Light weight, high strength, good toughness, low thermal conductivity, good heat insulation and heat preservation performance, high density, good sound insulation.

#### 复合实木地板

##### Composite Wood Floor

复合实木地板纹路逼真，超强耐磨，耐高温，不易变形，防火吸音。

Composite wood flooring grain realistic, super wear-resistant, high temperature resistance, not easy to deformation, fire and sound absorption.

#### 底座

##### Foundation

4-6个镀锌钢底座，承重能力强，可以放在任何地形的基础上。

4-6 galvanized steel bases, high load-bearing capacity and can be placed on a foundation in any terrain.

#### 铝板

##### Aluminum Panel

外墙采用2.5mm铝板，氟碳烤漆工艺，不易生锈，能使用30年。

The exterior wall is made of 2.5mm aluminum plate with fluorocarbon baking paint process, which is not easy to rust and can be used for 30 years.

#### 聚氨酯泡沫

##### Polyurethane Foam

外部整体喷涂50mm聚氨酯泡沫，作为保温层第二层，密封性更强，阻燃防火，气密隔音，吸音性能好。

External overall spraying 50mm polyurethane foam, as the second layer of thermal insulation, stronger sealing, fire retardant, fire prevention, airtight sound insulation, sound-absorbing performance, green and environmental protection.

#### 挤塑板

##### Extruded Polystyrene Board

50mm挤塑板作为保温层第一层，保温隔热，阻燃防火，绿色环保。

50mm extruded plastic board as the first layer of thermal insulation, thermal insulation, fire retardant and fire prevention, green environmental protection.

#### 欧松板

##### Oriented Strand Board

8mm欧松板，易加工，提供良好的结构支撑和稳定性，绿色环保，防潮。

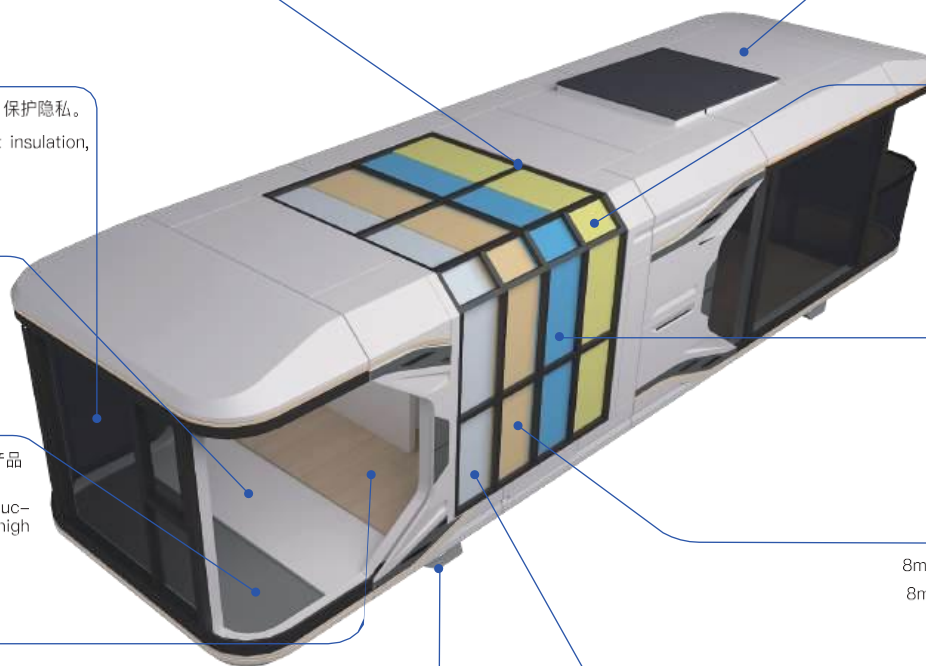
8mm europine board, easy to work with, provides good structural support and stability, green and moisture resistant.

#### 碳晶板

##### Carbon Crystal Plate

内墙使用6mm碳晶板，板材静音，高密封性，防虫蚁、防潮防腐，阻燃，高强度，不变形，易擦洗。

The inner wall uses 6mm carbon crystal board, plate mute, high sealing, anti-insects and ants, moisture anti-corrosion, fire-retardant, high-strength, non-deformation, easy to scrub.







## 发货

太空舱从中国发货到海外，有两种发货方式，整装交和模块化。因为房子很大，整装需要用到40FR集装箱，一个柜子只能装一个，当然运费会贵点。如果你是购买多个房子为你的项目，可以选择拆装方案。

## DELIVERY

The capsule is shipped from China to other countries, there are two ways of shipping, whole house delivery and modular delivery. Because the house is big, so it requires 40FR container to load for the whole house delivery, one container for one house, of course the shipping cost will be more expensive. If you are buying many houses, you can choose the disassembled option.



## 地基

在房子送达之前，您需要准备地基。我们将为您提供详细的说明和必要的图纸。同时，提前规划好水电系统。我们已经在房子外部预留了水电管道，接入你当地的公共系统即可。

## FOUNDATION

Before the house is delivered to you, you will need to prepare the foundations for it. We will provide you with detailed instructions and necessary drawings. Also, plan ahead for water, electricity and other systems. We have reserved plumbing and electrical pipes on the exterior of the house, just connect into your local utility system.



## 安装

太空舱可以整体交付或模块化交付。如果是整体交付，安装非常简单，只需要用吊机即可。整个太空舱重量6-10吨。如果是分体交付，我们会提供给你详细的图纸或视频说明进行组装。如果你是给你的项目购买多个数量，我们也从中国派遣工程师团队指导组装和安装。

## INSTALLATION

The house can be delivery in the whole house or parts. You can arrange for a freight forwarder to deliver it. If delivered in the whole house, the installation is very simple and can be done in a few hours. If delivered in house parts, you can assemble it with detailed drawings and video instructions or our engineers team from China to guide assembly and installation.





苹果舱  
APPLE CABIN

2



拓展性高

High expandability



不限地形

No terrain Restriction



精装交付

Fine Decoration



项目落地快

Fast Project Building



安装简单

Easy Installation



投资回报高

High Return On Investment





**A1(5.6m)**

外形尺寸/L\*W\*H: 5.6m\*2.25m\*2.45m

面积/Area: 12.6m<sup>2</sup>



**A1(11.5m)**

外形尺寸/L\*W\*H: 11.5m\*2.25m\*2.45m

面积/Area: 25.9m<sup>2</sup>



**D1**

外形尺寸/L\*W\*H: F1:11.5m\*4.5m\*2.4m F2: 11.5m\*2.25m\*2.45m

面积/Area: 51.8m<sup>2</sup>+25.9m<sup>2</sup>



**A2**

外形尺寸/L\*W\*H: 11.5m\*3m\*3m

面积/Area: 34.5m<sup>2</sup>

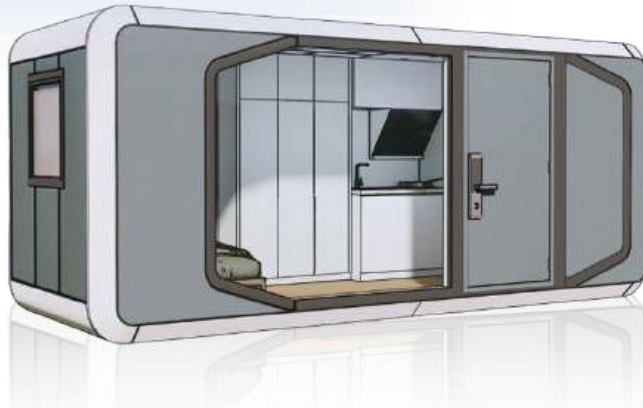


**A3**

外形尺寸/L\*W\*H: 11.5m\*7.6m\*3m

面积/Area: 88m<sup>2</sup>

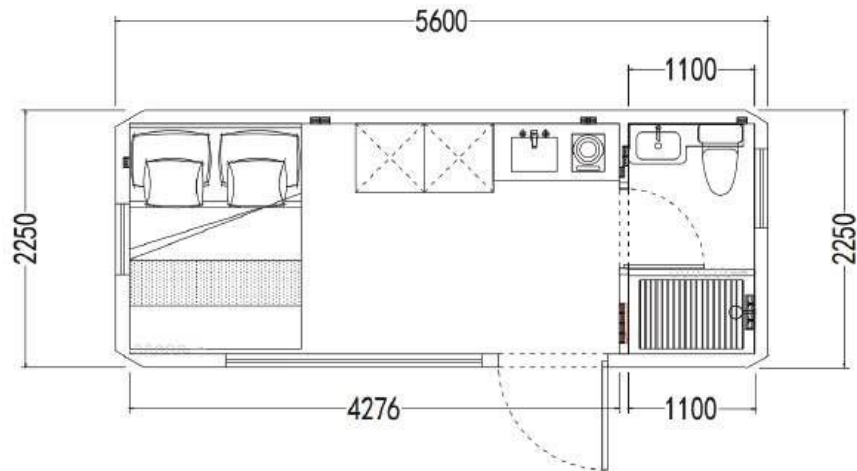




外形尺寸/L\*W\*H: 5.6m\*2.25m\*2.45m 面积/Area: 12.6m<sup>2</sup>

苹果舱系列是volferda的中端产品，方形规则的空间设计，可用于住宿、办公等用途，拓展性高。其中A1系列是所有房型中最具性价比的房型，包含5.8m和11.5m两个长度尺寸的型号，减少了房子的宽度和高度，使得房子能直接装进40HQ，节省运费。

The Apple Cabin series is Volferda's mid-range product, with a square and regular space design that can be used for accommodation, office and other purposes with high expandability. The model A1 series is the most cost-effective of all the room models, containing two length-size models of 5.8m and 11.5m, which reduces the width and height of the house, making it possible to fit the house directly into the 40HQ and save on delivery costs.

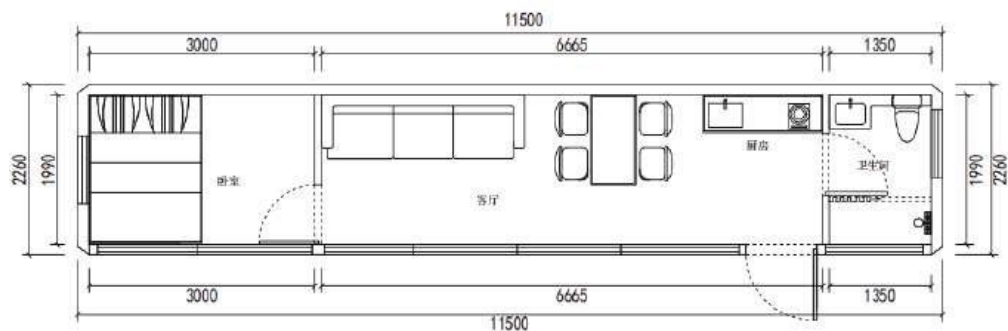




■ 外形尺寸/L\*W\*H: 11.5m\*2.25m\*2.45m    面积/Area:25.8m<sup>2</sup>

A1的11.5m长度的房子，是最具性价比的房型，加长了长度，使得内部空间很大，在原有的一室一厅一厨房设计。最重要的是可以直接放进去40HQ，节省运费。无论个人自己住还是民宿酒店，都是一个很好的选择。

The model A1 11.5m is the most cost-effective. Its extended length creates ample interior space, complementing the existing one-bedroom, one-bathroom, one-living room, and one-kitchen design. Most importantly, it can perfectly fit in 40HQ, saving shipping costs. Whether you're staying alone or in a B&B or hotel, it's a great choice.



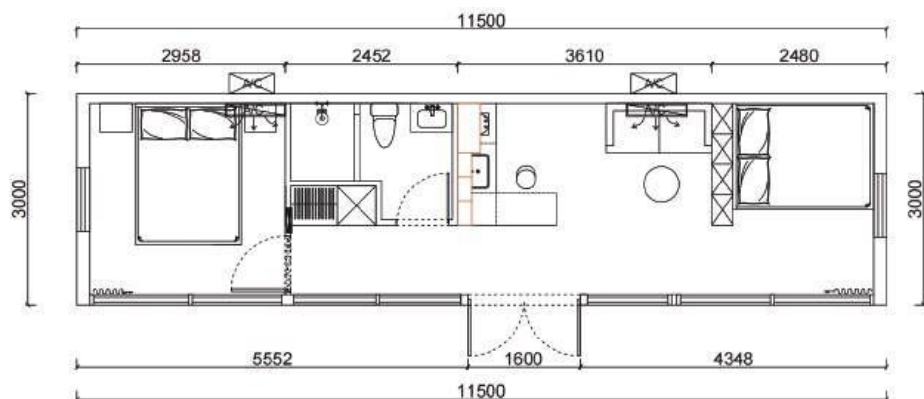




■ 外形尺寸/L\*W\*H: 11.5m\*3m\*3m    面积/Area:34.5m<sup>2</sup>

A2的11.5m, 是A2 8.5m的加长版, 在原有的两室一卫的布局基础上, 可以增加厨房和客厅, 使得房子空间更大。矩阵纵向的空间布局, 空间利用率更高。整体造型, 干净简练。特别适合个人家庭自住, 或者经济民宿酒店。

The model A2 11.5m is the extended version of the A2 8.5m, based on the original two-bedroom, one-bath layout, the kitchen and living room can be added, making the house more spacious. Matrix vertical space layout, space utilization is higher. Overall modeling, clean and concise. Especially suitable for individual family self-living, or economic B&B hotel.

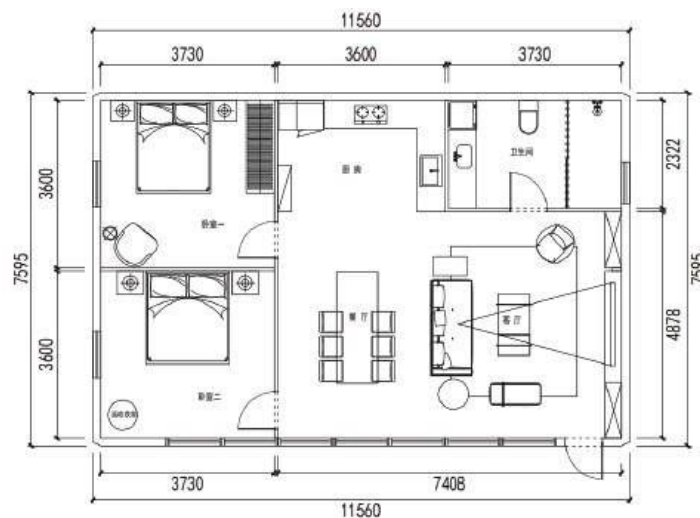




■ 外形尺寸/L\*W\*H: 11.5m\*7.6m\*3m 面积/Area: 88m<sup>2</sup>

A3是目前我们面积最大的单层房子，面积达到88m<sup>2</sup>，2室1卫1厨房1客厅的布局，空间很大，厨房可以放烤箱冰箱，卫生间可以放洗烘一体洗衣机，客厅还有超大餐桌、沙发和电视背景墙，内部豪华配置。这是一个模块化房子，方便运输，组装也很简单。如果你想要一个大型豪华的家或者办公室，这个一定是首选。

The model A3 is our largest single-story house, measuring 88m<sup>2</sup>. It features two bedrooms, one bathroom, a kitchen, and a living room. This spacious layout allows space in the kitchen for appliances like an oven and refrigerator, the bathroom for a washer-dryer, and the living room includes a large dining table, sofa, and TV wall. This is a modular house and is easy to ship in 40ft container and assemble. If you're looking for a large, luxurious home or office, this is the perfect choice.



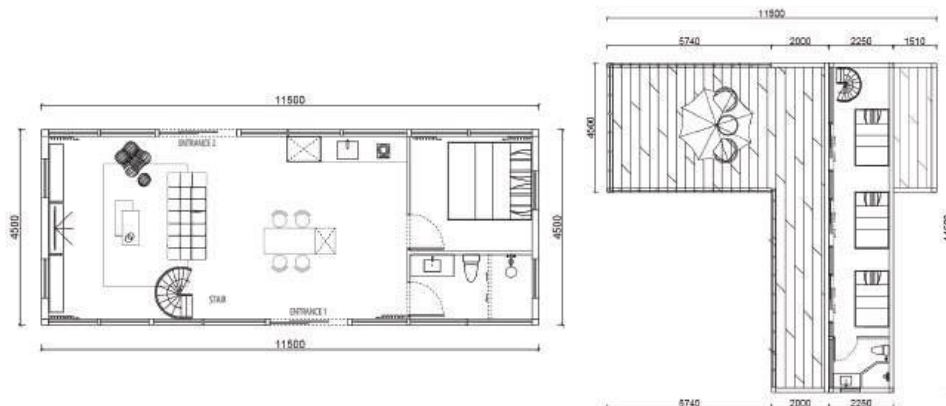




外形尺寸/L\*W\*H: F1: 11.5m\*4.5m\*2.45m F2: 11.5m\*2.25m\*2.45m 面积/Area: 51.8m<sup>2</sup>+25.9m<sup>2</sup>

D1是面积最大的房型，采用双层交叉叠放设计，造型美观。一楼空间很大，适合做客厅或者展厅，一楼可通过内部旋转楼梯直通二楼，二楼有房间，而且外部有个超级大的露台，可休息可聚会Party。D1适合大面积居住体验，也可以用于办公、展厅等用途。房子可以拆成4个小舱体，直接装进40HQ，再当地拼装，节省运费。

D1 is the largest model, with a double cross-stacked design and beautiful styling. The first floor has a lot of space, suitable for living room or showroom, the first floor can lead to the second floor through the internal rotary staircase, there are rooms on the second floor, and there is a super large terrace outside for resting or partying. D1 is suitable for a large living experience, but also can be used for office, showroom and other purposes. The house can be disassembled into 4 small pods that fit directly into the 40HQ and then assembled locally to save on shipping costs.







怡然居  
NATURAL HOUSE

3



性价比高

Cost Effective



不限地形

No terrain Restriction



精装交付

Fine Decoration



项目落地快

Fast Project Building



安装简单

Easy Installation



投资回报高

High Return On Investment

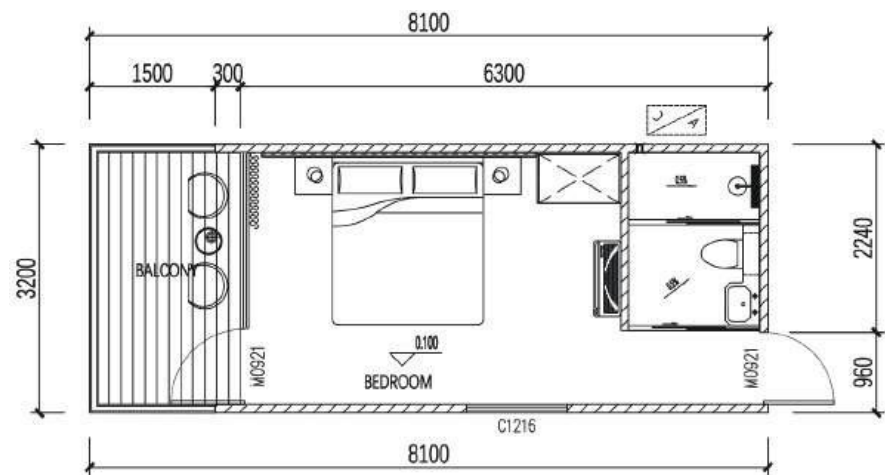




■ 外形尺寸/L\*W\*H: 6.6m+1.5m (balcony) \*3.2m\*3.4m 面积/Area: 21.12m<sup>2</sup>

N系列房型是最具性价比的房子。外观采用小木屋的经典造型，面积超过20m<sup>2</sup>，还配备了1.5m的户外露台，但价格并不贵。外观可选白色、褐色，与自然融为一体。模块化拆装设计，方便海外运输，组装简单，节省项目成本。适用于做个人自住、民宿等用途。

The model N series is the most cost effective house. The exterior is in the classic shape of a cabin, with an indoor area of over 20m<sup>2</sup> and a 1.5m outdoor terrace, but it is not expensive. White and brown are available, blending in with nature. Modular disassembly design, easy to transport overseas, easy to assemble and save project cost. Suitable for use as a personal owner-occupier, B&B and other purposes.



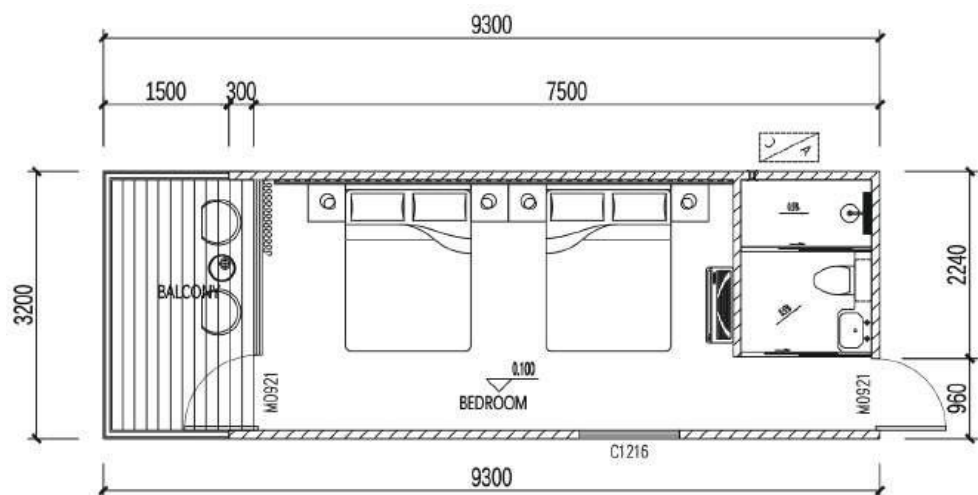


外形尺寸/L\*W\*H: 7.8m+1.5m (balcony)\*3.2m\*3.4m 面积/Area: 24.96m<sup>2</sup>



房型N2是N1的加长版，把房子的长度从6.6m增加到7.8m，使得内部空间更大，可以放置2张床，性价比更高。外观可选白色、褐色。模块化拆装设计，可直接用40HQ运输，组装简单。适合用于做民宿酒店和露营地等用途。

The model N2 is an extended model of N1, increasing the length of the house from 6.6m to 7.8m, making it more cost-effective with more space inside for 2 beds. White and brown are available. Modular disassembly design, can be directly transported by 40HQ, easy to assemble. Suitable for use to make B&B hotel and campground and other purposes.



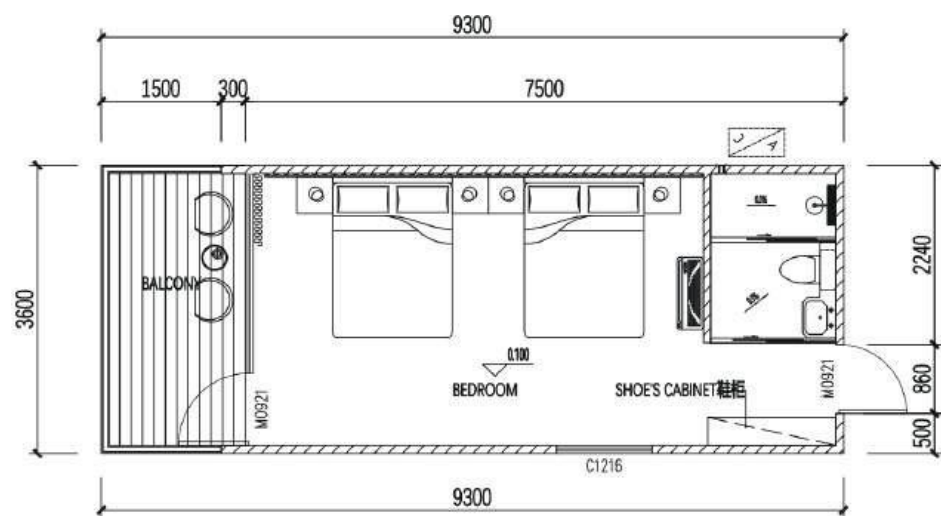




■ 外形尺寸/L\*W\*H: 7.8m+1.5m (balcony)\*3.6m\*3.35m 面积/Area: 28.06m<sup>2</sup>

房型N2 Plus是N2的升级版，把房子的宽度从3.2m增加到3.6m，使得内部空间更大，可以放置两张床。外观可选白色、褐色。模块化拆装设计，可直接用40HQ运输，组装简单。适合用于做个人自住、民宿酒店等用途。

The model N2 Plus is an upgraded model of the N2, increasing the width of the house from 3.2m to 3.6m, allowing for more interior space and more interior layouts. White and brown are available. Modular disassembly design, can be directly transported by 40HQ, easy to assemble. Suitable for use as a personal self-living, hotel and camping.



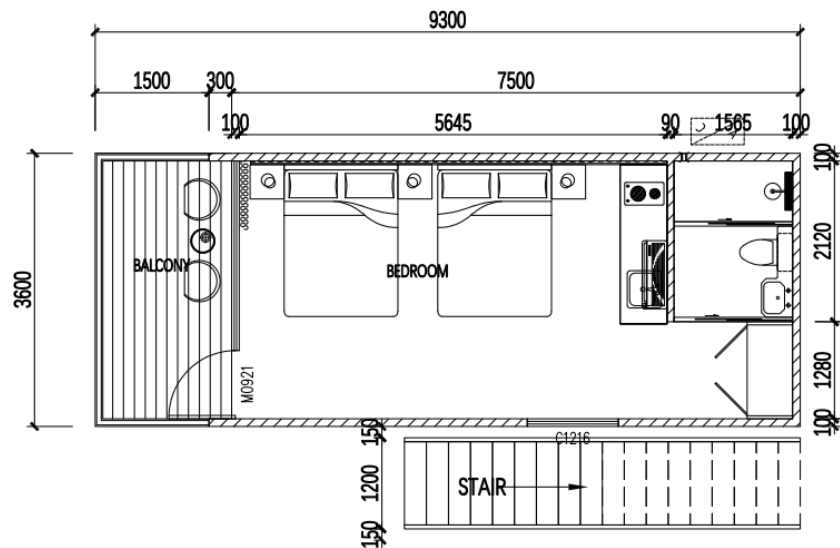


■ 外形尺寸/L\*W\*H: 7.8m+1.5m (balcony)\*3.6m\*6.7m 面积/Area: 49.92m<sup>2</sup>



N2 Plus-D房型一个双层的房子，在原来N2 Plus型号的基础升级而成。外观采用小木屋的经典造型，两层结构，使得面积更大，第二层阳台，有更好的观景视觉。外观可选白色、褐色，与自然融合一体。模块化拆装设计，方便海外运输，组装简单，节省项目成本。适合用于做个人自住、民宿等用途。

Model N2 Plus-D is a two-story house, upgraded from the original model N2 Plus. The exterior adopts the classic shape of a tinyhouse, with a two-story structure, making a larger area and a second story balcony for better viewing vision. White and brown are available, blending with nature. Modular disassembly design, convenient for overseas transportation, easy to assemble and save project cost. Suitable for use as personal self-occupancy, B&B and other purposes.





### 保温装饰一体板

Thermal insulation and decorative one-piece board

装饰效果卓越，强度高、环保、保温、防水防火、耐酸耐碱。  
Excellent decorative effect, high strength, green environmental protection, heat preservation, fireproof and waterproof, acid and alkali resistance.

### 石塑锁扣地板

Stone Plastic Locking Floor

石塑地板纹路逼真，超强耐磨，光亮而不易打滑，具备高弹性，超强抗冲击、防水防潮、吸音防燥等优势，防火指标可达B1级。

Stone plastic floor pattern is still really beautiful, super wear-resistant, shiny surface and not slippery, with high elasticity and super impact resistance, waterproof and moisture-proof, sound and noise absorption and other advantages, fire prevention indicators up to B1 level.

### 地板防潮膜

Floor Moisture Barrier Film

实木地板防潮膜运用各种高分子材料制成，可防水防潮；能有效减少木地板受潮后起拱、发霉、变黑等问题。

Wooden floor moisture-proof membrane using a variety of polymer materials, can be waterproof, moisture-proof. It can effectively reduce the problems of arching, mold and blackening of wooden floors after being exposed to moisture.

### 底座

Foundation

承重能力强，满足现代环境中各种设备的需要。

Strong load-bearing capacity: able to meet the needs of a variety of equipment in the current environment.

### 单向防潮呼吸纸 One-way moisture-resistant breathable paper

具备优秀的防水性能和透气性能，集合了质轻、强韧、透气、防水、耐磨、耐穿刺、耐老化、抗紫外线等特性，环保可回收。

With excellent waterproof performance and breathability, it gathers lightweight, strong, breathable, waterproof, abrasion-resistant, puncture-resistant, aging-resistant, UV-resistant, etc. It is environmentally friendly and recyclable.

### 钢龙骨 Steel keel

轻钢龙骨具有强度高、钢度高、防火性能及抗震性能好。

Light steel keel has high strength, high steel degree, good fireproof performance and anti-seismic performance.

### 挤塑板/聚氨酯 Extruded panels/polyurethane

采用的保温材料保温隔热性能优越、阻燃防火，气密隔音，吸音性能好，绿色环保，不含甲醛。  
Adoption of thermal insulation materials, thermal insulation, superior performance, fire retardant, fire prevention, airtight sound insulation, sound-absorbing performance, green environmental protection, does not contain formaldehyde.

### 中晶板/碳晶板 Medium Crystal Plate/Carbon Crystal Plate

板材静音/高密封性，防水防潮，防虫蚁、防潮防腐、阻燃、高强度、不变形，易擦洗/不变形。

Panel mute/high sealing, waterproof and moisture-proof, insect-proof, ant-proof, ant. Moisture-proof, anti-corrosion, anti-corrosion, anti-insect, flame retardant, high strength, no deformation, easy to scrub/no deformation.

### 内装饰面 Interior surface

美观舒适:通过选择不同的材料和颜色，增添建筑物的美感和个性。  
Aesthetics and comfort: By choosing different materials and colors, it adds beauty and personality to the building.



## 发货

怡然居在采用模块化运输，一套房子将会被拆分成20多块提前预制好的模块，可以直接放进40HQ，节省运费。一个40HQ可以装2-3套房子。

## DELIVERY

Natural House uses modular delivery, a house will be split into 20+ pre-fabricated modules in advance, which can be put directly into 40HQ to save shipping cost. One 40HQ can hold 2-3 houses.



## 组装

在模块化房子送达之后，你需要组装。整个房子组装并不复杂，不需要专业施工人员以及也不需要用到专业设备。我们将为您提供详细的图纸说明和视频指导。4个人1天就可以组装完成一套房子。

## ASSEMBLY

After the modular house is delivered, you need to assemble it. The whole house assembly is not complicated and does not require professional workers as well as specialized equipment. We will provide you with detailed drawings and video instructions. 4 people can assemble a house in 1 day.



## 安装

在房子安装之前，您需要准备地基。同时，提前规划好水电系统。怡然居安装非常简单，房子整体重量3-5吨，只需要用吊机。

## INSTALLATION

Before the house is installed, you will need to prepare the foundation. Also, plan the plumbing and electrical systems in advance. The installation of the Nutrual House is very simple, the overall weight of the house is 3-5 tons, and you only need to use a crane.

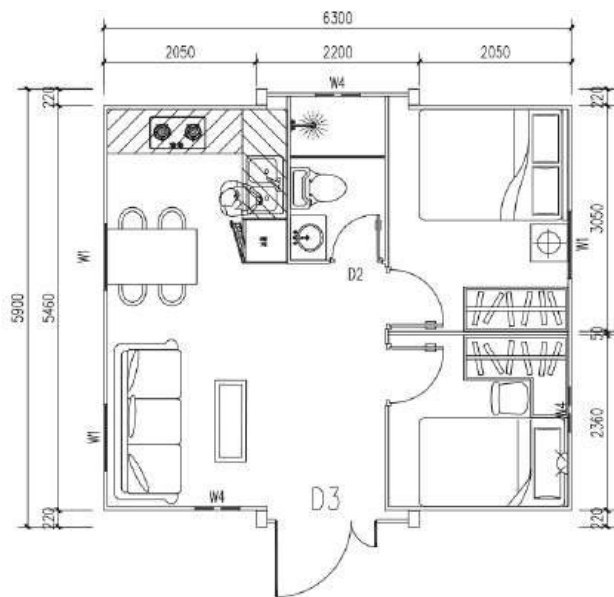




■ 外形尺寸/L\*W\*H: 5.9m\*6.3m\*2.48m 面积/Area: 37.17m<sup>2</sup>

N3房型是20英尺可扩展集装箱房屋，是经济实惠的便携式房屋。超大的内部空间和加强了隔热性能提供了极致的舒适感，两间卧室的布局是小型房屋、海滩小屋、临时居住、度假居住或工人住宿的理想选择。这个房屋折叠式运输，可以装进40HQ，一个40HQ可以装两套房子，易于安装，展开箱体就可以得到一个房子。

The model N3 is a 20ft expandable container home, which is an affordable portable home. The extra interior space and enhanced insulation provide ultimate comfort, and the two bedroom layout is ideal for small houses, beach cabins, temporary living, holiday living, or worker accommodations. This house folds for shipping, fits into 40HQ, one 40HQ fits two units, easy to set up, unfold the box to get a house.

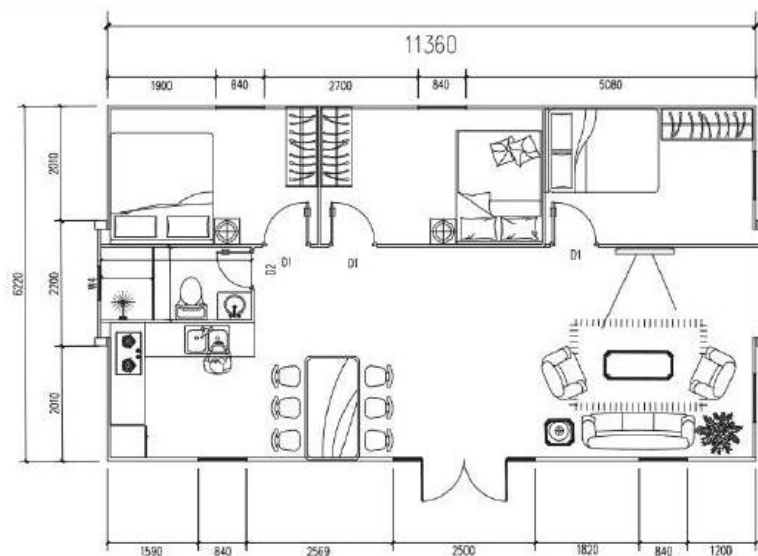




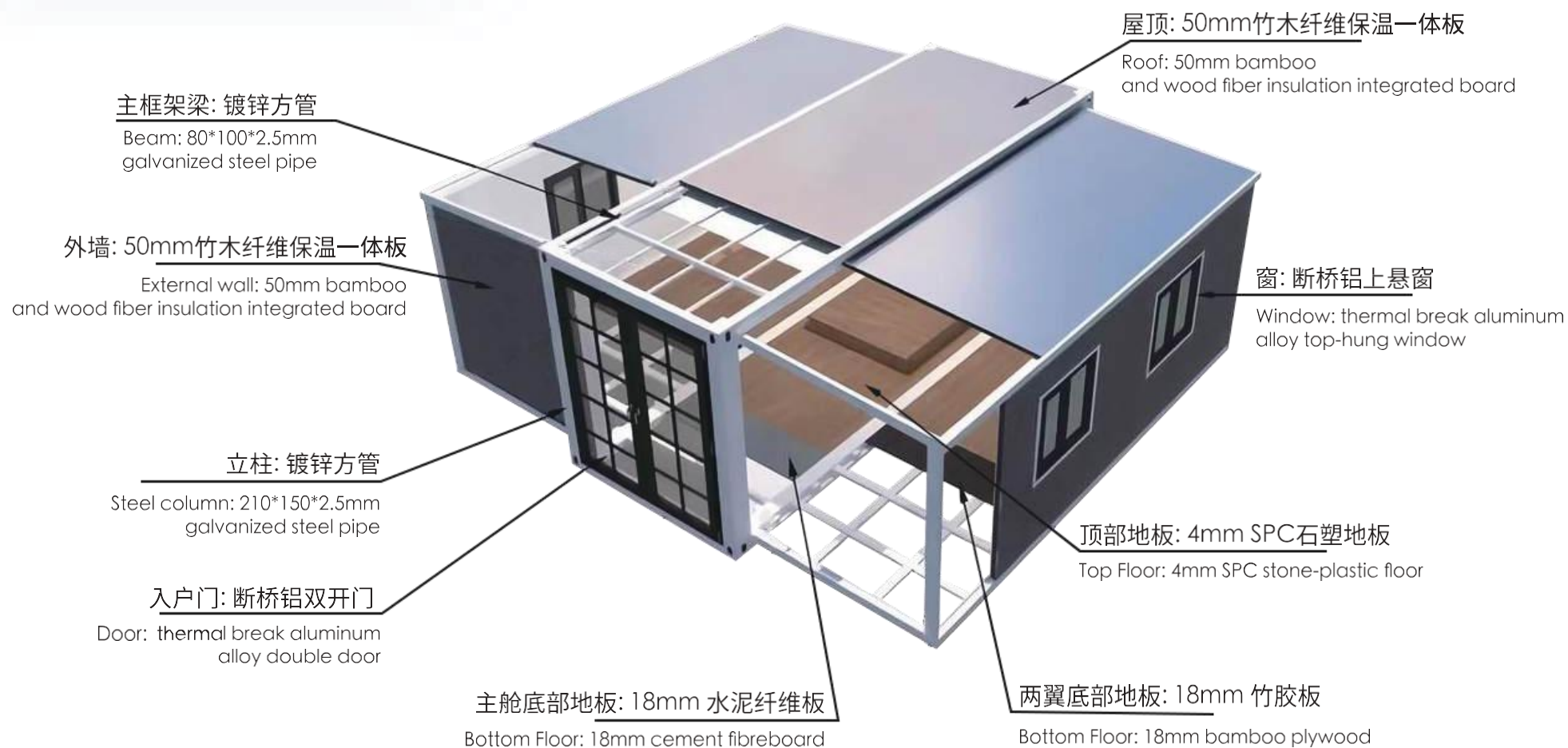
■ 外形尺寸/L\*W\*H: 11m\*6.3m\*2.48m 面积/Area: 69.3m<sup>2</sup>

N3 Plus型号是40英尺可扩展集装箱房屋，是经济实惠的便携式房屋。超大的内部空间和加强了隔热性能提供了极致的舒适感，两间卧室的布局是小型房屋、海滩小屋、临时居住、度假居住或工人住宿的理想选择。这个房屋折叠式运输，可以装进40HQ，一个40HQ可以装一套房子，易于安装，展开箱体就可以得到一个房子。

The model N3 Plus is a 40ft expandable container home, which is an affordable portable home. The extra interior space and enhanced insulation provide ultimate comfort, and the two bedroom layout is ideal for small houses, beach cabins, temporary living, holiday living, or worker accommodations. This house folds for shipping, fits into 40HQ, one 40HQ fits one unit, easy to set up, unfold the box to get a house.









## 包装

拓展屋两侧的房間墙体是可活动的，在运输的时候会被折叠到中间，使得整体房子尺寸变小，使得能直接放进去40尺集装箱，方便运输。

## PACKING

The room walls on both sides of expandable house are movable and will be folded into the centre when packing, making the overall house size smaller, making it possible to fit right into a 40ft container for easy shipping.



## 发货

拓展屋采用折叠式运输，可以直接装入40HQ，节省运费。一个40HQ可装入两个N3型号，一个40HQ可装入一个N3 Plus型号。

## DELIVERY

Expandable houses are shipped folded and can be loaded directly into a 40ft container to save on shipping costs. One 40HQ will fit two N3 models and one 40HQ will fit one N3 Plus model.



## 安装

在拓展屋送达之后，展开房子就可以得到一套大房子。我们将为您提供详细的图纸说明和视频指导，4个人2个小时就可以完成一套房子。型号N3拓展屋房子重达3.5吨，型号N3 Plus拓展屋重达5.5吨，可以直接放在硬化的地面上，或者几个混凝土地基上。

## INSTALLATION

After the house is delivered, unfold the house to get a large house. We will provide you with detailed drawing instructions and video tutorials, and 4 people can install a house in 2 hours. The N3 models (20ft expandable house) weighs 3.5 tonnes, and the N3 Plus model (40ft expandable house) weighs 5.5 tonnes, and can be placed directly on hardened ground, or on several concrete foundations.





星空房  
DOME HOUSE

4



成本低  
Lower Cost



酒店住宿  
Hotel Living



餐厅聚餐  
Restaurant Dinner



不限地形  
No Terrain Restriction



安装简单  
Easy Installation



投资回报高  
High Return On Investment



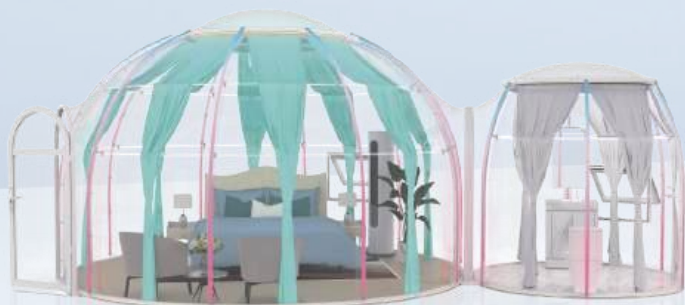
**C1**

■ 直径尺寸/φ: 2.5m/3m/3.5m/4m....  
面积/Area: 4.9m<sup>2</sup>/7.1m<sup>2</sup>/9.6m<sup>2</sup>/12.5m<sup>2</sup>...



**C2**

■ 长度尺寸/L: 5.5m/7m/8.5m/10m....  
面积/Area: 18.6m<sup>2</sup>/24.6m<sup>2</sup>/30.6m<sup>2</sup>/36.6m<sup>2</sup>...



**C3**

■ 直径尺寸/φ: 4m/4.5m/5m/6m....  
面积/Area: 17.4m<sup>2</sup>/20.8m<sup>2</sup>/24.5m<sup>2</sup>/33.2m<sup>2</sup>...



**C4**

■ 长度尺寸/L: 3.6m/4.2m/4.8m/5.4m/6m....  
面积/Area: 10.6m<sup>2</sup>/12.7m<sup>2</sup>/14.9m<sup>2</sup>/17m<sup>2</sup>...





■ 外形尺寸/ $\Phi$ \*H: 4m\*2.8m 面积/Area:12.5m<sup>2</sup>

星空房系列是性价比最高的产品之一。360度全景透明视野，将美景尽收眼底。搭配上灯带装饰，梦幻多彩。墙体采用PC板，能承受上百斤的重击。保温隔热。模块化拆卸运输，3个人2小时就可以组装完成，适合酒店民宿、餐厅等用途。

The Dome House series is one of the most cost-effective products. 360-degree panoramic and transparent view to take in the beautiful scenery. It is decorated with light strips, dreamy and colorful. The wall is made of PC board, which can withstand hundreds of pounds of pounding. Thermal insulation. Modular disassembly and transportation, 3 people can be assembled in 2 hours, suitable for hotel B&B, restaurant and other uses.



$\Phi$ \*H: 2.5\*2.5m / 4.9m<sup>2</sup>



$\Phi$ \*H: 4.5\*2.9m / 15.9m<sup>2</sup>



$\Phi$ \*H: 5\*3.1m / 19.6m<sup>2</sup>



$\Phi$ \*H: 6\*3.5m / 28.3m<sup>2</sup>







外形尺寸/L\*W\*H: 7m\*4m\*2.8m 面积/Area:24.6m<sup>2</sup>

C2型号是长方形的星空房，内部面积更大。搭配卫生间隔断，可以做成一室一卫的布局。顶部安装排风系统，通风透气，不闷热。表面UV涂层，阻隔紫外线，不用担心会晒黑。可以任意拼接，做成面积更大的房型，更适合民宿住宿、餐厅等多种需求。

The model C2 is a rectangular dome house with a larger interior. With the bathroom partition, it can be made into a one-room and one-bathroom layout. Ventilation system installed on the top, ventilation and air permeability, not stuffy. The UV coating on the surface blocks ultraviolet rays, so you don't have to worry about tanning. Can be spliced arbitrarily to make a larger room type, more suitable for B&B accommodation, restaurants and other needs.



L\*W\*H: 5\*3.5\*2.7m  
Area:14.9m<sup>2</sup>



L\*W\*H: 5.5\*4\*2.8m  
Area:18.6m<sup>2</sup>



L\*W\*H: 6.5\*3.5\*2.7m  
Area:20.1m<sup>2</sup>



L\*W\*H: 8.5\*4\*2.8m  
Area:30.6m<sup>2</sup>

\* Model C2 has many sizes, please inquire for details.





■ 外形尺寸/Φ:  $\Phi 5m + \Phi 2.5m$  面积/Area:  $24.52m^2$

C3型号是组合款星空房，随意拼装组合不同大小的星空房，打造成一室一卫、两室一卫等多种房型，满足了不同客户的需求。采用球型设计，有效分散风流，12级台风也安然无恙。模块化现场拼装结构，不挑地形，节省运费。

The model C3 is a combination of starry sky room, random assembly combination of different sizes of starry sky room, into a one-room or two-bedroom and one-bathroom and other room types, to meet the needs of different customers. The circular design effectively disperses the wind flow and is safe even in a 12-stage typhoon. Modularized on-site assembling structure, not picking terrain and saving delivery cost.



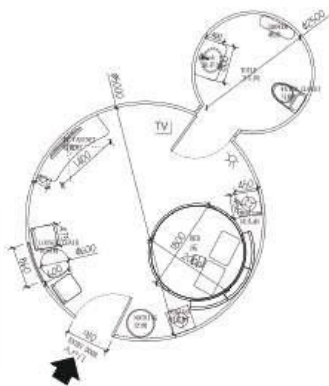
Φ:  $4m + 2.5m$  /  $17.4m^2$

Φ:  $5m + 4m + 2.5m$  /  $37m^2$



Φ:  $6m + 2.5m$  /  $33.2m^2$

Φ:  $6m + 4m + 2.5m$  /  $45.7m^2$



\* Model C3 has many sizes, please inquire for details.





■ 外形尺寸/L\*W\*H: 6.6m\*3.6m\*3.68m 面积/Area:21.20m<sup>2</sup>

C4型号设计灵感来源于帆船，外观新颖。16mm厚的PC板，保温隔热。骨架采用6063航空铝型材，更抗风雪。不透明的墙体，既能保护隐私，采光更好。模块化拼装，运输方便，组装快。搭配隔断卫浴，可做成一室一卫布局，更适合酒店民宿。

The model C4 is inspired by sailboat and has a novel appearance. 16mm thick PC board for heat insulation. The skeleton is made of 6063 aviation aluminum profile, more resistant to wind and snow. Opaque walls for privacy and better lighting. Modular assembling, easy to transport and quick to assemble. With partition bathroom, it can be made into one room and one bathroom layout, more suitable for hotel B&B.



L\*W\*H: 5.4m\*3.6m\*3.68m  
AREA:17m<sup>2</sup>



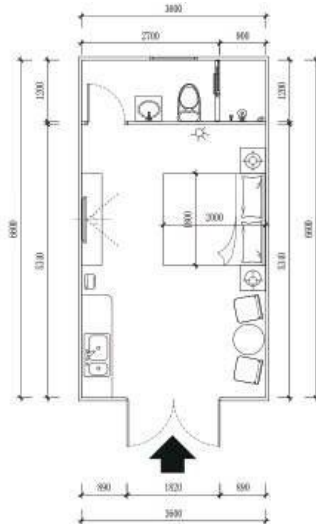
L\*W\*H: 6m\*3.6m\*3.68m  
AREA:19.1m<sup>2</sup>



L\*W\*H: 7.2m\*3.6m\*3.68m  
AREA:23.4m<sup>2</sup>



L\*W\*H: 7.8m\*3.6m\*3.68m  
AREA:25.5m<sup>2</sup>



\* Model C4 has many sizes, please inquire for details.



## ■ 标准版 STANDARD CONFIGURATION

PC透明壳体  
PC Transparent Housing

PC穹顶  
PC Dome

铝合金门  
Aluminum doors

铝合金窗户  
Aluminum window

物理门锁  
Physical door lock

铝合金底部型材  
Aluminum bottom profile

## ■ 选配 OPTIONAL

顶部排烟系统  
Top smoke extraction system

遮阳系统  
Shading systems

LED氛围灯系统  
LED ambient lighting system

防虫纱网门窗  
Insect screen doors and windows

双人床/沙发/茶几/电脑书桌/椅子家具  
Double bed/sofa/coffee table/Computer desk/chair furniture

卫浴/马桶/浴缸  
Bathroom/Toilet/Bathtub

镜子/衣架/洗脸架  
Mirror/Hanger/Washstand

各种灯具/液晶电视/空调/冰箱  
Various lamps/LCD TVs/Air conditioner/Refrigerator

卫浴地板/防潮地垫/防腐木地板  
Bathroom Flooring/Moisture Mats/Anti-corrosive wood flooring

专属客制化布局方案  
Exclusive customized layout plan



304不锈钢螺丝  
加长螺杆 承受力度大

**Screw-retained**  
Longer screws with high  
load bearing capacity



连接门  
连接各类房间  
**Joint door**  
Connected various  
types room



排风系统  
通风透气 不闷热  
**Ventilation System**  
entilation without  
stuffiness



加大铝合金窗(纱窗)  
通风效果好 空气流通性强  
可搭配金刚纱网 防蚊虫

**Aluminium alloy window**  
Push-pull design,  
ventilation and comfort



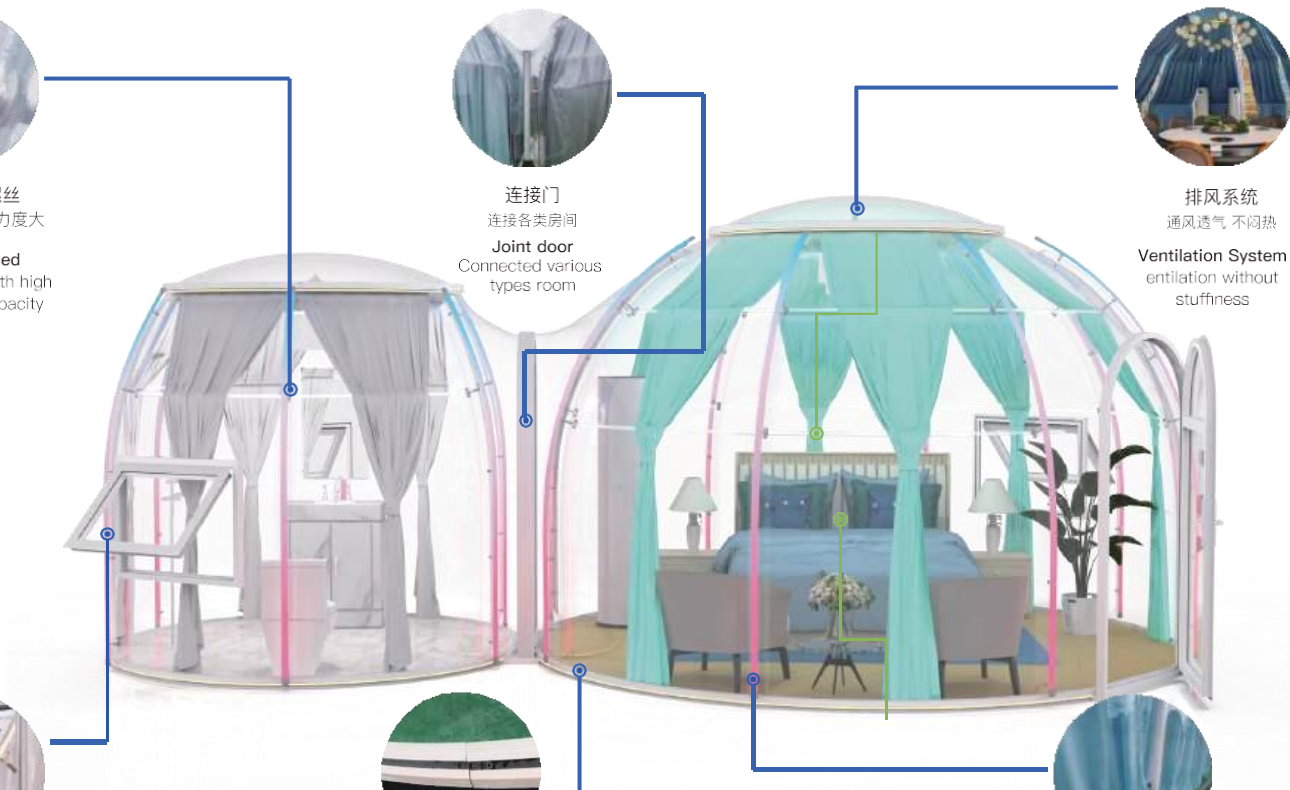
航空铝合金底座  
无缝拼接 固定便捷

**Aluminium base**  
Seamless splicing for  
convenient fixation



外置卡扣灯带  
散热快 安全美观 不易断电 耐脏易清洗

**Lamp with brackets**  
100% waterproof,  
safe and durable





## 发货

星空房采用模块化运输，PC板、门、窗、型材等相关材料用泡沫包装好，可以直接放进去40HQ，节省运费。

## DELIVERY

Dome house uses modular delivery, PC boards, doors, windows, profiles and other related materials are packed with foam in advance in the factory, which can be put in 40HQ to save shipping cost.



## 地基

在房子送达之前，您需要准备地基。我们将为您提供详细的说明和必要的图纸。同时，提前规划好水电系统。

## FOUNDATION

Before the house is delivered to you, you will need to prepare the foundations for it. We will provide you with detailed instructions and necessary drawings. Also, plan ahead for water, electricity and other systems.



## 安装

星空房安装非常简单，每块板材之间用卡扣连接，不需要专业施工人员和专用设备，一天可以安装好几套房子。同时我们会提供给你详细的图纸或视频说明进行组装。

## INSTALLATION

Dome house installation is very simple, each panel is connected with snap fasteners between each panel, no need for professional builders and specialized equipment, you can install several houses in one day. Meanwhile, we will provide you with detailed drawings or video instructions for assembly.





Instagram

@SPRECIDESING2023

Facebook

@SPRECIDESING2023



[www.sprecidesin.com](http://www.sprecidesin.com)



[info@sprecidesing.com](mailto:info@sprecidesing.com) /  
[sales@sprecidesing.com](mailto:sales@sprecidesing.com)



10597W 33RD Ln. FL 33018 – USA



(USA) +13055604789